



# SAP und HP Roadmap

Klaus Wagner  
SAP Competence Center

© 2004 Hewlett-Packard Development Company, L.P.  
The information contained herein is subject to change without notice



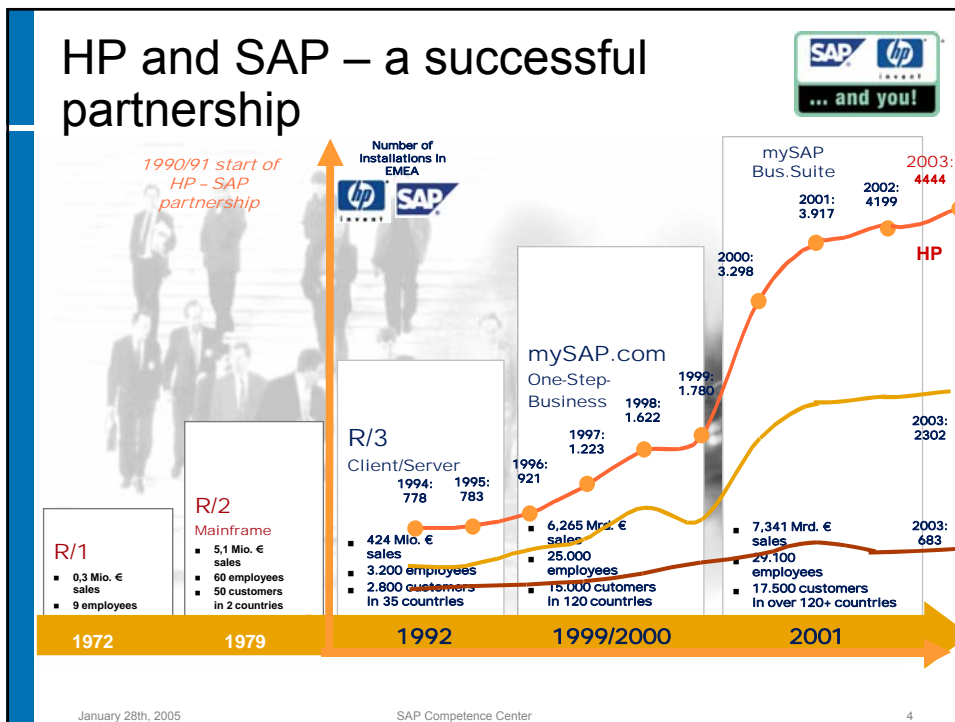
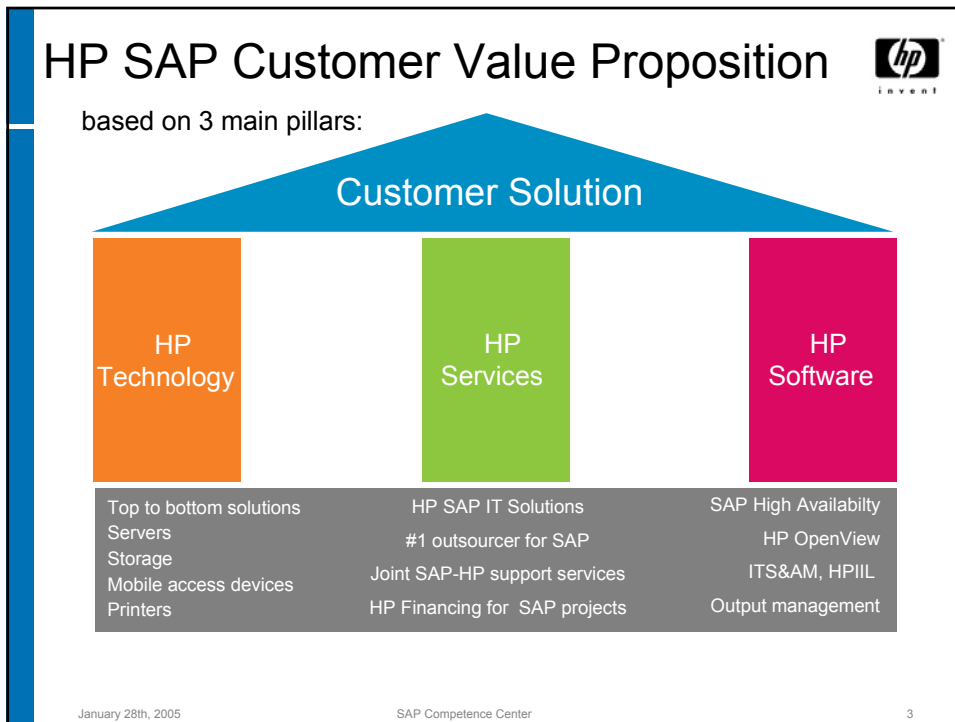
The slide features a blue header with the HP Invent logo and the title 'SAP und HP Roadmap'. Below the title, the name 'Klaus Wagner' and 'SAP Competence Center' are listed. A copyright notice is at the bottom left. On the right side, there is a map of the Heidelberg region with a large white 'HP' logo overlaid on it. The map shows various towns and roads, with a red pin marking a location near Waldorf.



## Agenda

- SAP und HP
- SAP Evolution
- VIS, Competent Cluster
- BI Accelerator
- ITS & AM, Output Management
- SAP Powerhouse

January 28th, 2005      SAP Competence Center      2





## “Global Partner” status

### Highest partnership levels

- Global Technology Partner
- Global Hosting Partner
- Global Services Partner
- Global Support Partner
- SAP Software Partner

### Customer benefits

- Trust in qualification and quality for every phase of a project
- Trust in capacity and ability to execute worldwide projects
- Proven, integrated and complete solutions

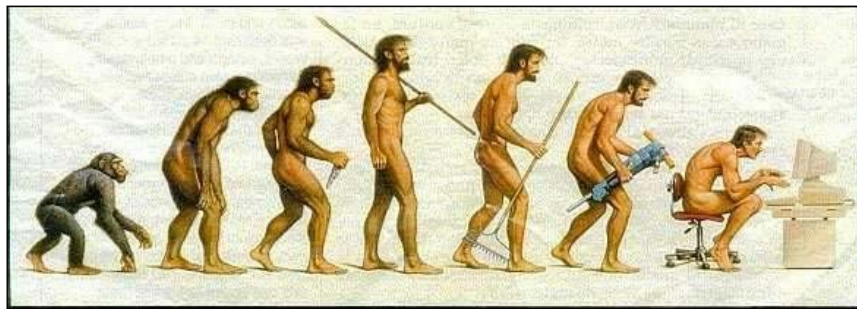


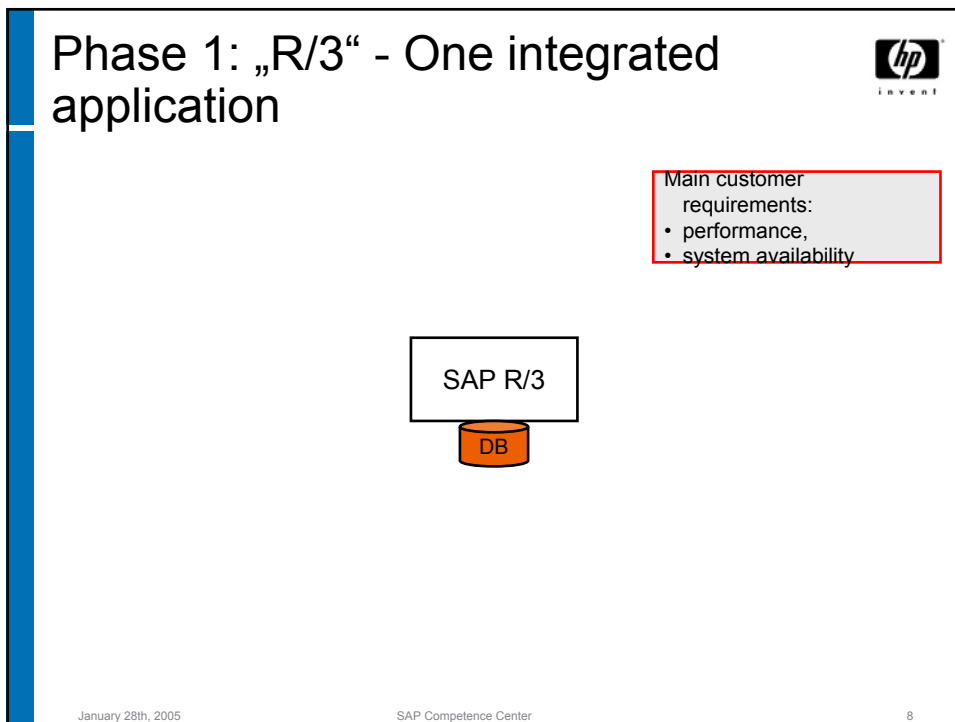
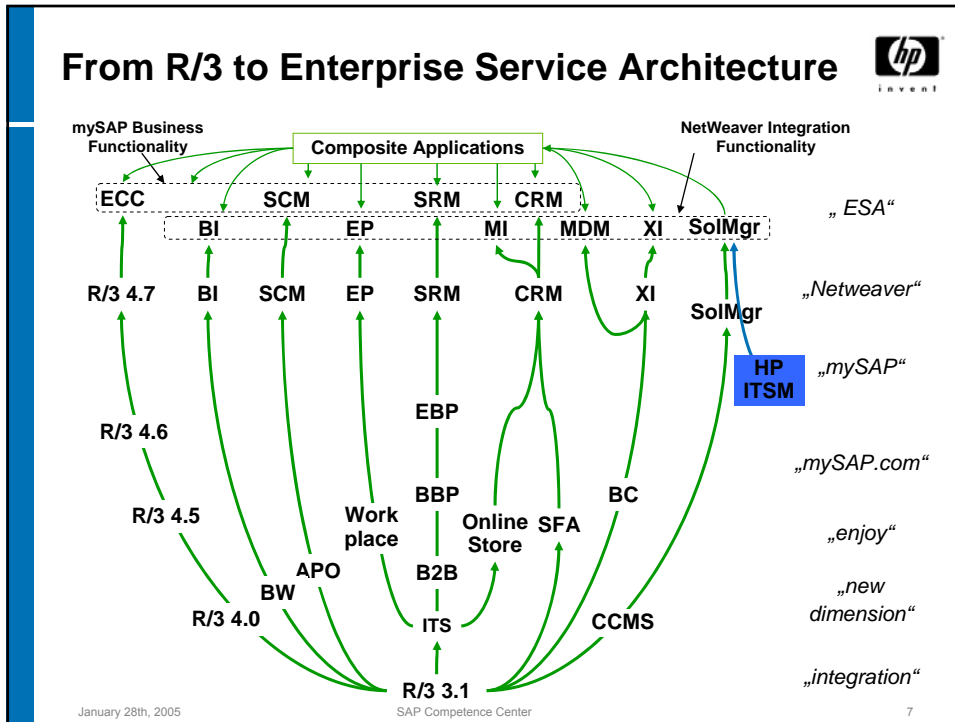
January 28th, 2005

SAP Competence Center


5

## Evolution of SAP: from R/3 to ESA



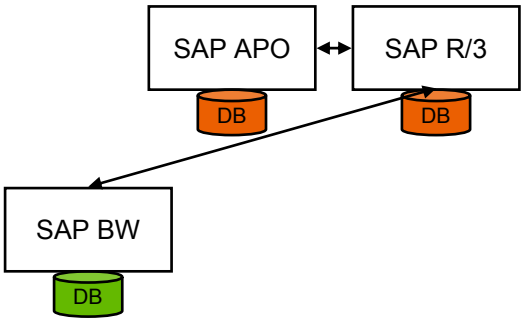


### Phase 2: „New Dimension“ - Several separate applications, some of them interfacing each other




New customer requirements:

- storage consolidation
- server consolidation



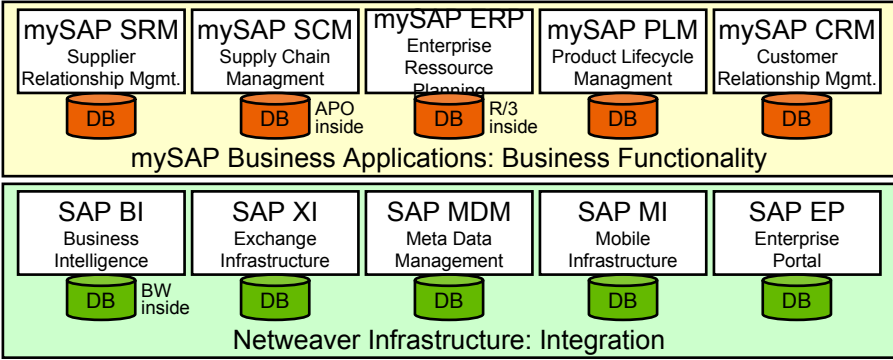
January 28th, 2005 SAP Competence Center 9

### Phase 3: „mySAP/Netweaver“ - Many integrated applications

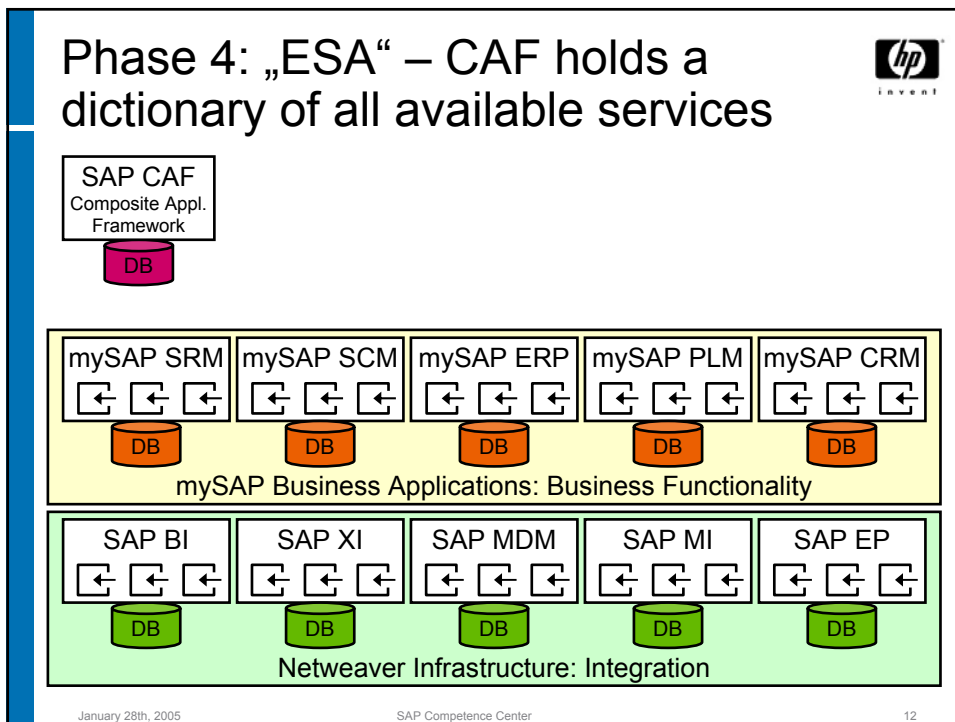
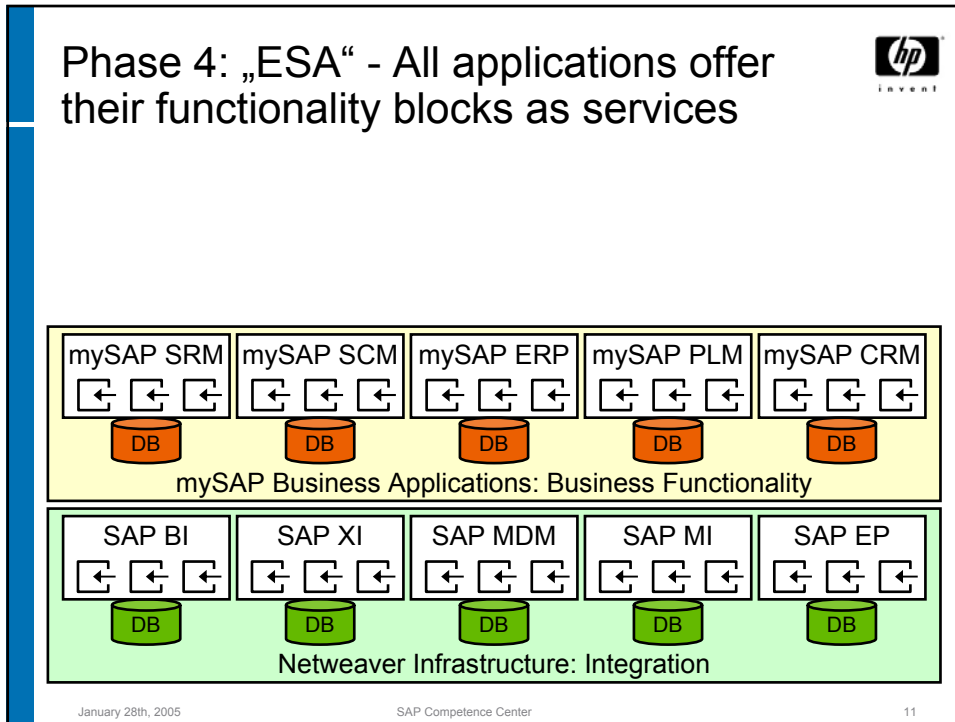


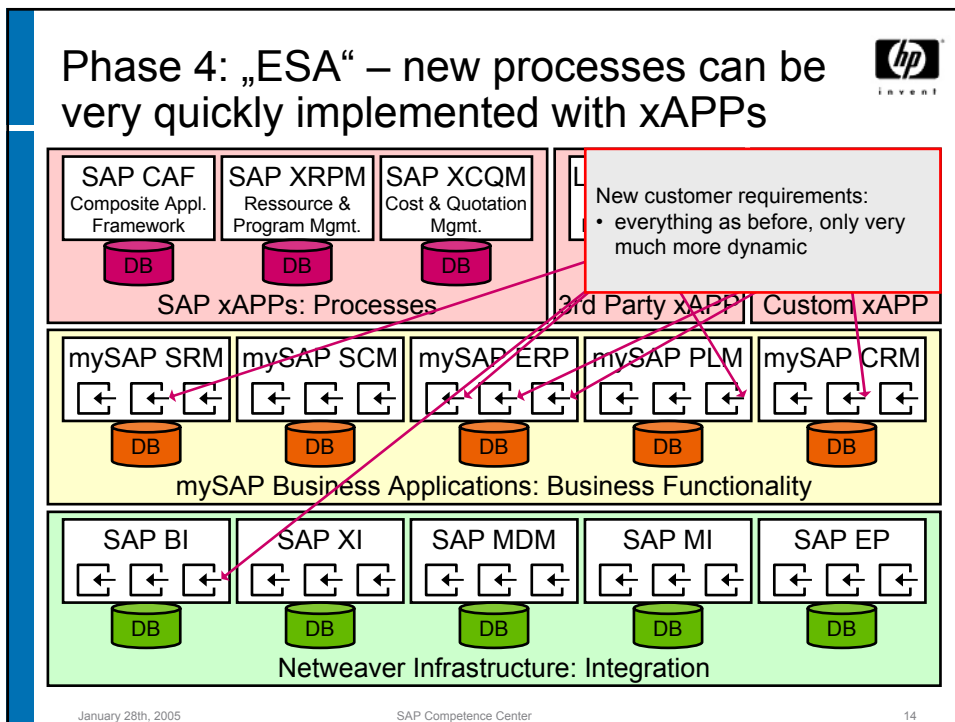
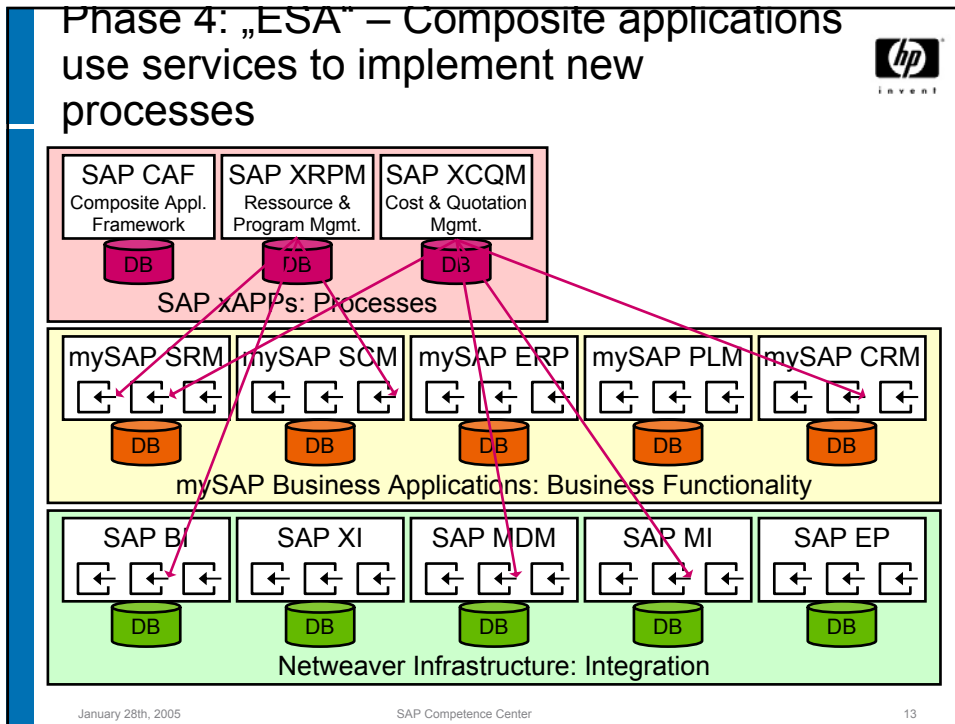
New customer requirements:

- manageability
- availability of business processes across applications
- flexible infrastructure



January 28th, 2005 SAP Competence Center 10





## Evolution of SAP: challenges for the customer

- SAP is a quickly moving target
  - Adaptability is key to follow new SAP technologies and architectures for a quick ROI
- Business processes depend from more and more SAP systems
  - Holistic management of SAP environment is the major challenge
  - High availability is paramount to ensure working business processes and thus ensure ROI
- ESA puts everything on steroids – changes happen much, much faster!

January 28th, 2005 SAP Competence Center 15

## But: where are you today?

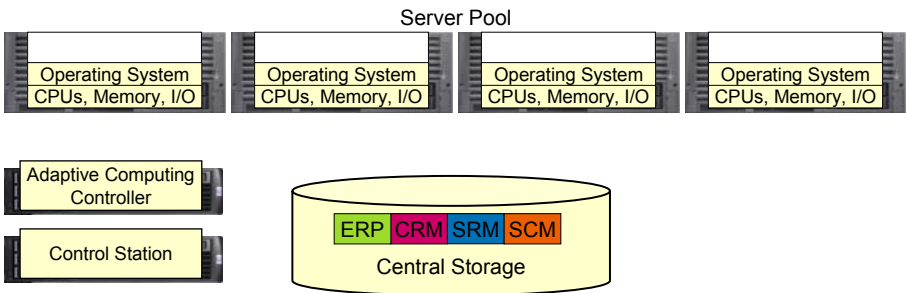
Phase 1: R/3	Phase 2: New Dimension	Phase 3: mySAP/ Netweaver	Phase 4: Enterprise Services Architecture (ESA)
performance, system availability	storage consolidation, server consolidation	manageability, availability of business processes, flexible infrastructure	everything on steroids

Solution has to match evolution phase!

January 28th, 2005 SAP Competence Center 16




## Basic infrastructure components for SAP Adaptive Computing

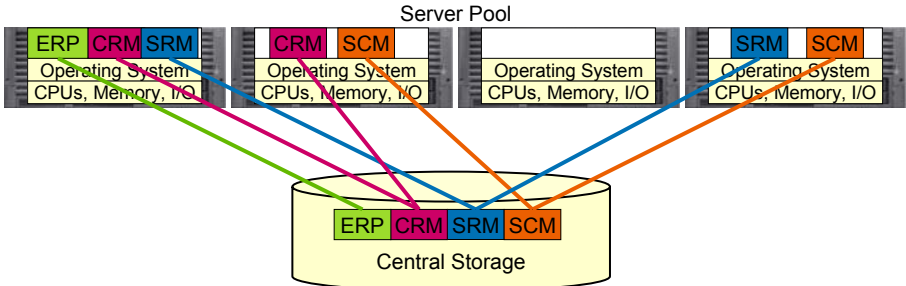


- Central storage holds all software installations and databases
- Servers out of the server pool can be flexibly connected to the central software installations and databases
- SAP Adaptive Computing Controller (ACC) to control start/stop/relocate of SAP services
- Control station for platform specific management tools

January 28th, 2005 SAP Competence Center 18


  
invent

## Use Case 2: Virtual Services



- **Multiple** SAP central systems per server
- SAP systems can be started/stopped/relocated on any server

January 28th, 2005      SAP Competence Center      19

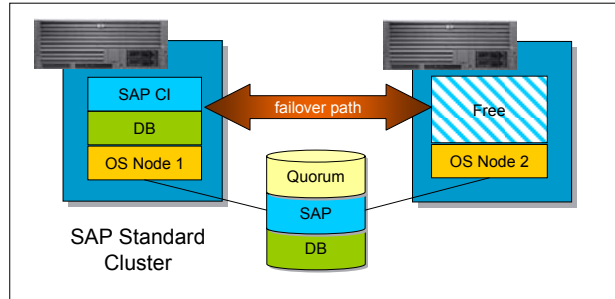
  
invent

## Where does it make sense?

- many SAP systems (min. 10)
- not-too-big SAP systems compared to server size (should fit on 4 ... 5 servers) – except database server is separate
- dynamic system environment, customer has a strong need to redistribute SAP services frequently
- downtime for redistribution is easily available

January 28th, 2005      SAP Competence Center      20

## Windows Clustering: SAP/MS standard as of today (SAP on MSCS)



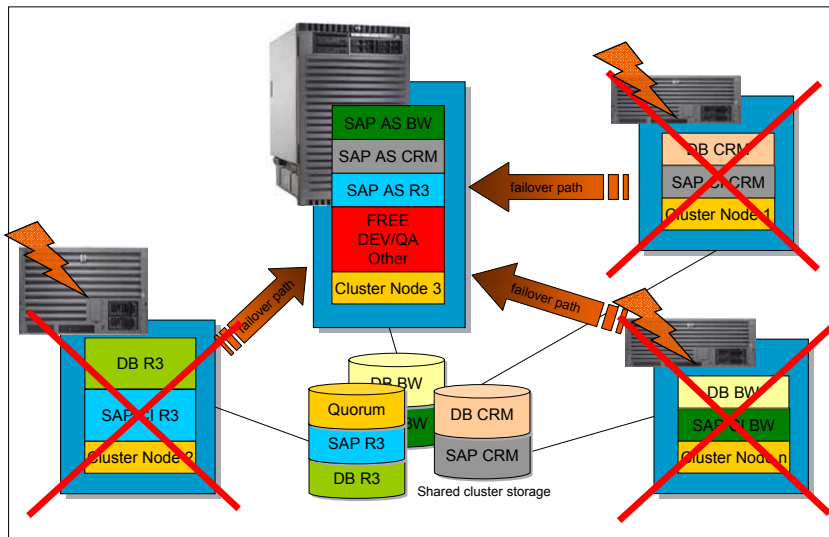
- Two node, single SAP instance cluster only!
- Poor hardware utilization (100% failover resources)
- Expensive
- Inflexible

January 28th, 2005

SAP Competence Center

21

## HP Competent Cluster: Cluster Resource Manager + application stacking



January 28th, 2005

SAP Competence Center

22




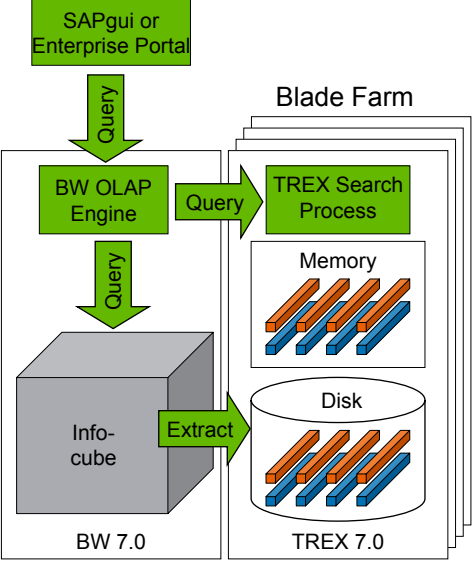
## why Business Intelligence accelerator?



- SAP BW databases grow to multi-Terabyte sizes:
  - even with datastructures optimized for reporting, some analytic queries on large databases take much too long
  - optimizing performance using aggregates:
    - requires effort to create and maintain the aggregates
    - only works for specific queries
    - if you vary your query too much runtime might explode
  - lots of expensive hardware needed to perform queries on multi-Terabyte databases

## Business Intelligence accelerator – under the hood







- Infocube data are extracted to TREX and stored on disk
- Once data are in TREX, the BW OLAP engine will get all data from there. The BW database is not accessed any more
- Delta extraction of data from Infocube to TREX is possible
- OLAP engine knows which part of the data is in TREX, and directs queries accordingly to the Infocube or TREX

January 28th, 2005
SAP Competence Center
25


## Why HP and SAP?



HP & SAP can jointly provide a unique customer value by combining the strengths of two market leaders:



HP SAP IT S&AM



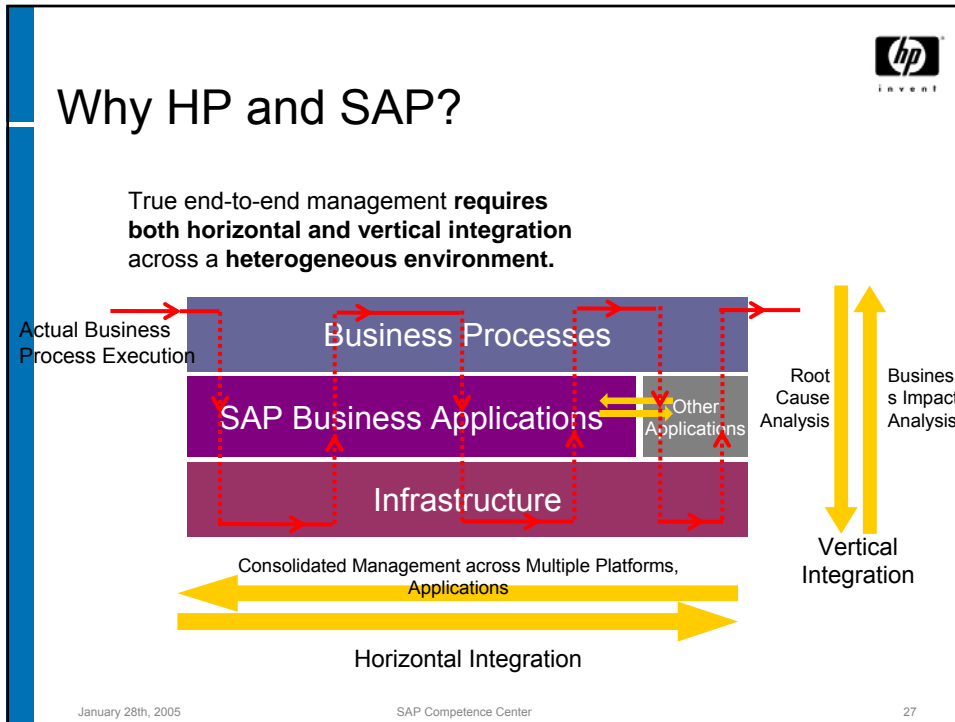
**HP strength:**  
Management of IT processes, skills and tools

**SAP strength:**  
Management of mission critical business applications and business processes

IT Service Management

SAP Application Lifecycle Mgmt.

January 28th, 2005
SAP Competence Center
26

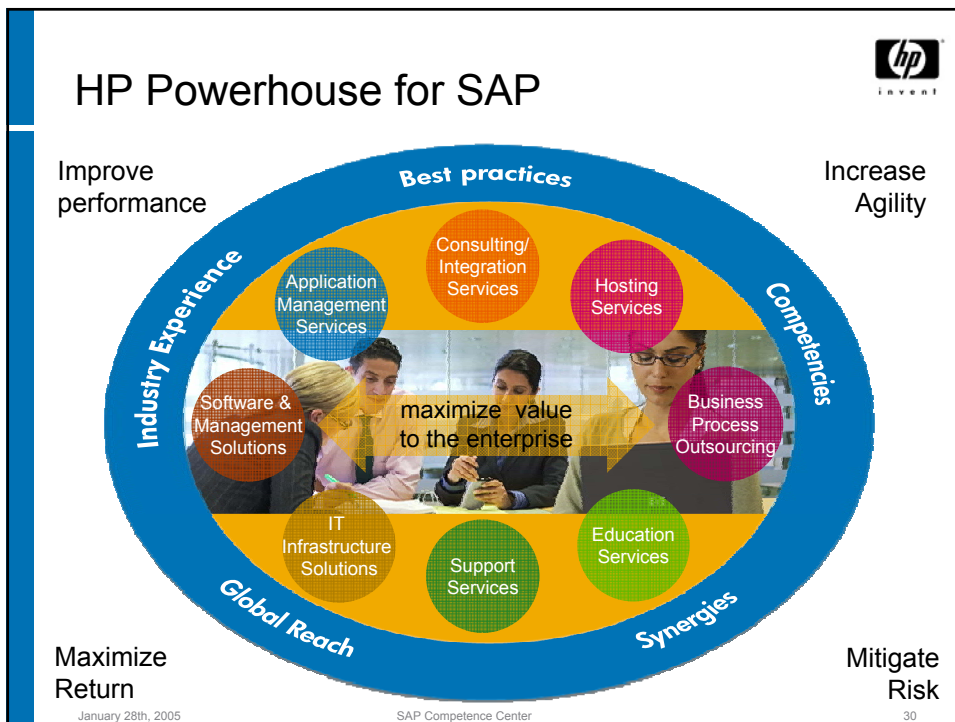
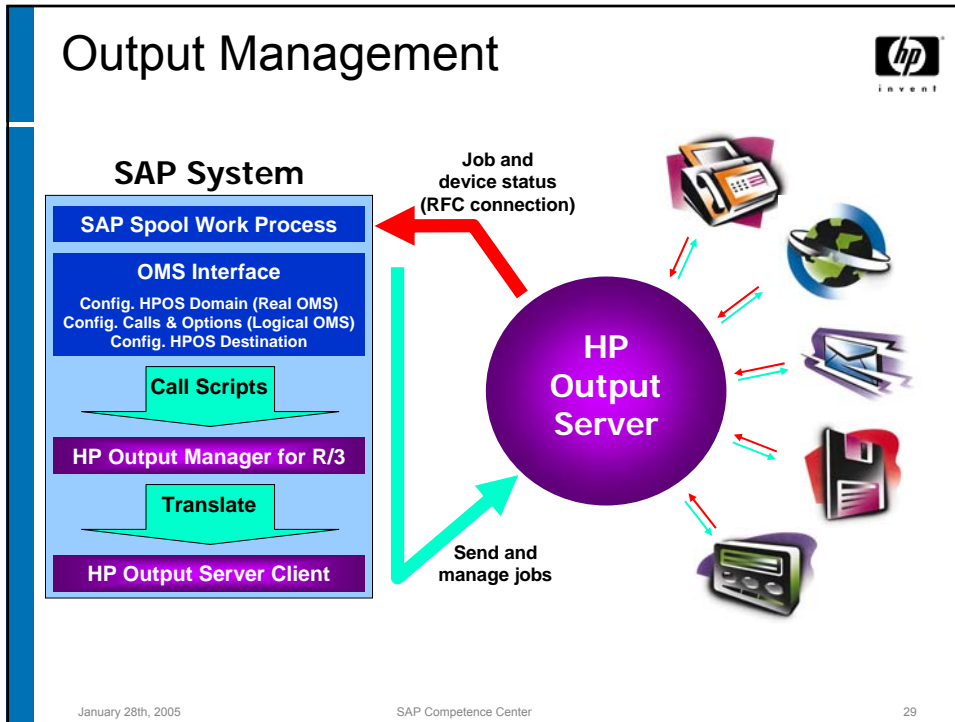


## Understanding the business process impact of IT problems (business view)

Business process steps affected by IT problem (= OVO message)

Real-time monitoring of Business Processes  
Press here to get more details about the affected Business Process

January 28th, 2005      SAP Competence Center      28





## Agenda

- ✓SAP und HP
- ✓SAP Evolution
- ✓VIS, Competent Cluster
- ✓BI Accelerator
- ✓ITS & AM, Output Management
- ✓SAP Powerhouse

January 28th, 2005

SAP Competence Center

31

